

# anti-RasGRP2-pSer<sup>587(649)</sup> affinity purified rabbit antibody IG-1209

Lot: 1283-5.6

Rev.: 20130916

Catalog #: 0222-020



**immunoGlobe**  
Antikörpertechnik GmbH

## Antibody preparation and storage

100 µl of rabbit antibody IG-1209 (200 µg/ml in PBS, 2 mg/ml BSA, 0.05% [w/v] NaN<sub>3</sub>), raised against and affinity purified on the phospho-peptide and depleted several-fold on the dephospho-peptide. Store at 4°C, do not freeze. Keep sterile. Stable for six months from date of shipment.

## Antigen

The synthetic phospho-peptide used as an antigen corresponds to a partial sequence of human RasGRP2 (CalDAG-GEFI) containing the phosphorylated serine [pS] of the following sequence stretch: ...SFSLPRPGRRG[pS]RPPE-IREEEVQTV... Depending on the isoform, this residue is designated either as pSer<sup>587</sup> (69.2 kDa isoform 1), or pSer<sup>649</sup> (75.5 kDa isoform 2). pSer<sup>586</sup> is the equivalent site in mouse and rat RasGRP2.

## Species cross-reactivity

Tested: Human, mouse

Sequence identity: Rat, Chinese hamster, guinea pig, rabbit, dog, cat, pig, cow, sheep

## Specificity

RasGRP2 phosphorylated at pSer<sup>587</sup> (human isoform 1) / pSer<sup>586</sup> (mouse) or pSer<sup>649</sup> (human isoform 2). Synonyms: RAS guanyl nucleotide-releasing protein 2, Ras guanyl releasing protein 2 (calcium and DAG-regulated), Calcium and DAG-regulated guanine nucleotide exchange factor 1, CalDAG-GEFI, cdc25-like protein, F25B3.3 kinase-like protein, guanine exchange factor MCG7, hCDC25L.

## Applications

Western (immuno) blotting (dilution 1:2,000; 100 ng/ml).

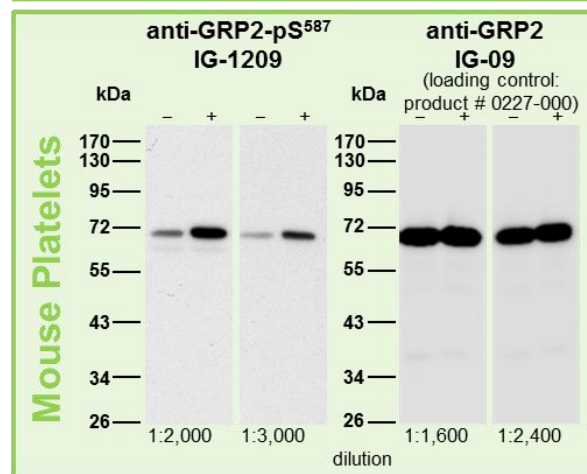
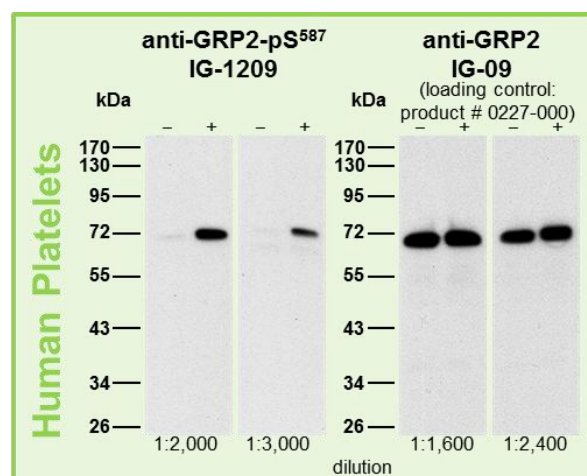
Other applications not tested

All dilutions refer to the analysis of cells and tissues with intermediate to high levels of RasGRP2 expression and must be viewed as approximate. The antibody should be titrated for each individual application.

## Western Blotting

Human (5 µg protein/lane) and mouse platelets (8 µg/lane) were either not stimulated (-) or were incubated with 5 µM Forskolin for 1 min (+).

Blot membranes were probed with the indicated dilutions of phospho-specific rabbit anti-GRP2-pSer<sup>587</sup> antibody IG-1209 or anti-pan-GRP2 antibody IG-09 (#0227-000; loading control). Anti-pan-GRP2 and anti-GRP2-pSer<sup>587</sup> antibodies were incubated in TBS/Tween (0.1%) with 5% or 0.5% milk, respectively.



## References

(\*: papers referencing antibody IG-1209)

- \* [1] Subramanian, H., Zahedi, R., Sickmann, A., Walter, U. & Gambaryan, S. (2013) Phosphorylation of CalDAG-GEFI by Protein Kinase A prevents Rap1b activation. *J. Thromb. Haemost.* **11** (8): 1574-82.

[Antibody cited as #1195]

For research use only — not for human, in vivo, diagnostic, therapeutic or other uses