

anti-RasGRP2

affinity purified rabbit antibody IG-09

Lot: 1307

Rev.: 20130916

Catalog #: 0227-125



immunoGlobe
Antikörpertechnik GmbH

Antibody preparation and storage

125 µg of rabbit antibody (1.25 mg/ml in PBS, containing 0.05% [w/v] NaN₃; carrier-free), raised against and affinity purified on a synthetic peptide. Store at 4°C, do not freeze. Keep sterile. Stable for six months from date of shipment.

Antigen

The synthetic peptide used as an antigen corresponds to a part of human RasGRP2 (CalDAG-GEFI) C-terminal of the RasGEF domain.

Species cross-reactivity

Tested: Human, mouse

Sequence identity: Rat, Chinese hamster, guinea pig, rabbit, dog, cat, pig, cow, sheep

Specificity

RasGRP2; Synonyms: RAS guanyl nucleotide-releasing protein 2, Ras guanyl releasing protein 2 (calcium and DAG-regulated), Calcium and DAG-regulated guanine nucleotide exchange factor 1, CalDAG-GEFI, cdc25-like protein, F25B3.3 kinase-like protein, guanine exchange factor MCG7, hCDC25L.

Applications

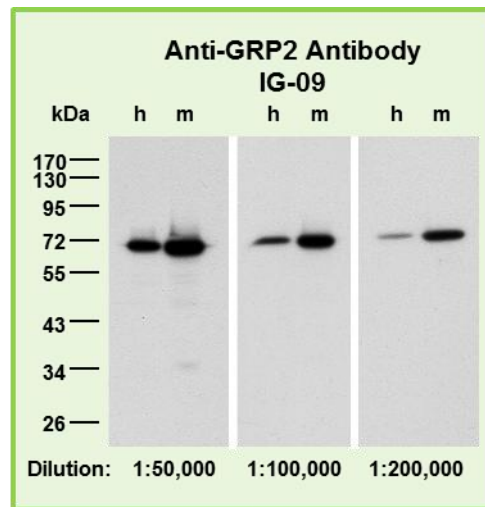
Western (immuno) blotting: dilution 1:50,000 - 1:100,000 (12.5 - 25 ng/ml)

Other applications not tested

All dilutions refer to the analysis of cells and tissues with intermediate to high levels of RasGRP2 expression and must be viewed as approximate. The antibody should be titrated for each individual application.

Western Blotting

Blot membranes with samples of human (h) and mouse (m) platelets (5 µg protein per lane, each) were probed with antibody IG-09, diluted in TBS/Tween (0.1%) with 5% milk as indicated.



References

(*: papers referencing antibody IG-09)

- * [1] Subramanian, H., Zahedi, R., Sickmann, A., Walter, U. & Gambaryan, S. (2013) Phosphorylation of CalDAG-GEFI by Protein Kinase A prevents Rap1b activation. *J. Thromb. Haemost.* **11** (8): 1574-82.

For research use only — not for human, in vivo, diagnostic, therapeutic or other uses